

# Trout in a Newark Street School Classroom

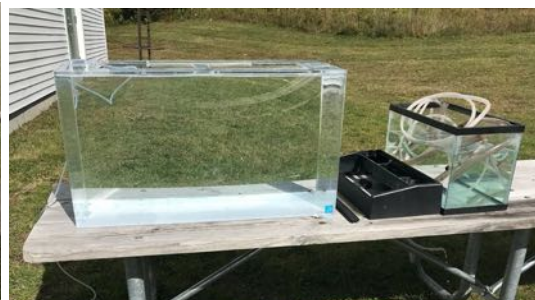
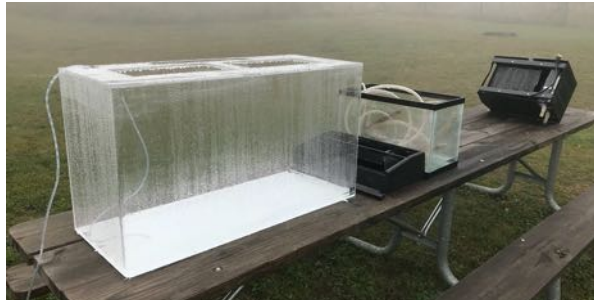
March 3, 2020



What a journey!

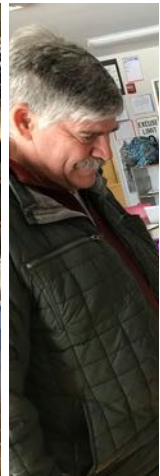
---

## Preparations, October 2019



---

January 9, 2020  
You got eggs! Hooray!  
Just so you know the "DI" today = 46.172.  
Temp at Eisenhower this morning was 43°F.  
The set ups look great!  
Grow some trout!  
Clark  
Clark Amadon  
MadDog TU TIC Coordinator



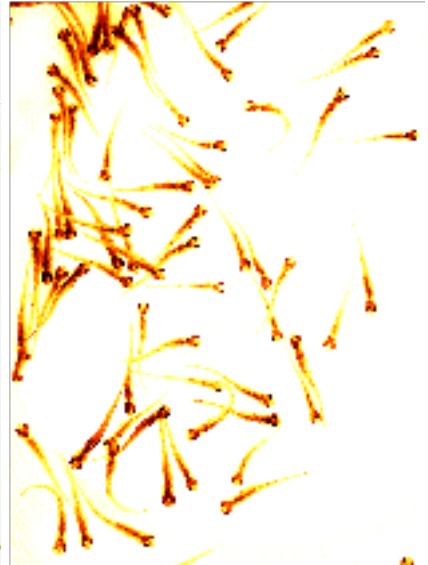
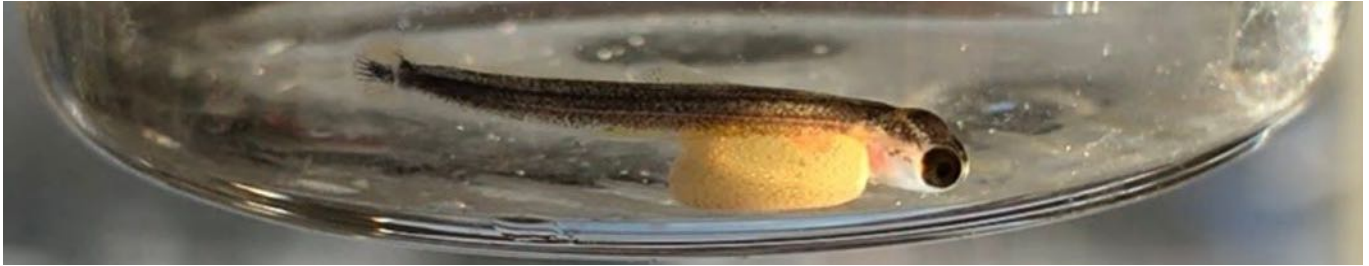


---

## The Brook Trout



January 9, 2020



February - March 2020

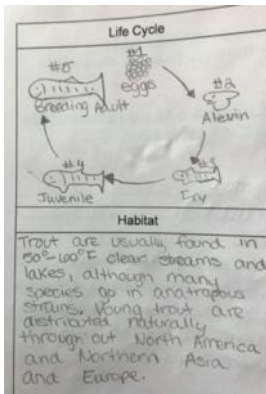
---

## Discussion Preparations - Grades 6-7-8 Science

Date: 02/06/20 - Discourse Options - Debate, **DISCUSSION**, Speech

Use resources in 678 STEAM and this organizer to prepare for Thursday's discussion.

**QUESTION:** Is releasing organisms grown in captivity in the wild a good idea? What are the pros and cons of raising trout in the classroom?

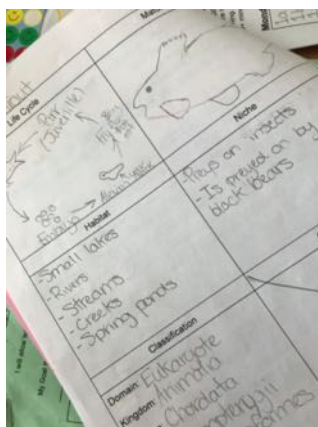


Pros	Cons
1. They are easy to keep in a tank.	1. They are expensive to buy and care for.
2. They are easy to feed.	2. They are prone to disease.
3. They are easy to observe.	3. They are prone to escape.
4. They are easy to breed.	4. They are prone to stress.
5. They are easy to handle.	5. They are prone to injury.
6. They are easy to transport.	6. They are prone to dehydration.
7. They are easy to clean.	7. They are prone to parasites.
8. They are easy to keep.	8. They are prone to aggression.
9. They are easy to observe.	9. They are prone to boredom.
10. They are easy to feed.	10. They are prone to obesity.

Pros	Cons
1. They are easy to keep in a tank.	1. They are expensive to buy and care for.
2. They are easy to feed.	2. They are prone to disease.
3. They are easy to observe.	3. They are prone to escape.
4. They are easy to breed.	4. They are prone to stress.
5. They are easy to handle.	5. They are prone to injury.
6. They are easy to transport.	6. They are prone to dehydration.
7. They are easy to clean.	7. They are prone to parasites.
8. They are easy to keep.	8. They are prone to aggression.
9. They are easy to observe.	9. They are prone to boredom.
10. They are easy to feed.	10. They are prone to obesity.

Pros	Cons
1. Source of food for people.	1. They are expensive to buy and care for.
2. Source of money.	2. They are prone to disease.
3. Helps fix waste problem.	3. They are prone to escape.
4. I believe that raising fish is a good source of food.	4. They are prone to stress.
5. For example, I believe that raising fish is a good source of food.	5. They are prone to injury.
6. I believe that raising fish is a good source of food.	6. They are prone to dehydration.
7. For example, I believe that raising fish is a good source of food.	7. They are prone to parasites.
8. I believe that raising fish is a good source of food.	8. They are prone to aggression.
9. For example, I believe that raising fish is a good source of food.	9. They are prone to boredom.
10. I believe that raising fish is a good source of food.	10. They are prone to obesity.

Cons
1. They might not survive.
2. They might contaminate other species with diseases.
3. They could have different DNA.



Pros	Cons
1. They are easy to keep in a tank.	1. They are expensive to buy and care for.
2. They are easy to feed.	2. They are prone to disease.
3. They are easy to observe.	3. They are prone to escape.
4. They are easy to breed.	4. They are prone to stress.
5. They are easy to handle.	5. They are prone to injury.
6. They are easy to transport.	6. They are prone to dehydration.
7. They are easy to clean.	7. They are prone to parasites.
8. They are easy to keep.	8. They are prone to aggression.
9. They are easy to observe.	9. They are prone to boredom.
10. They are easy to feed.	10. They are prone to obesity.

Cons
1. They might not survive
2. They might contaminate other species with diseases.
3. could have different DNA

Cons
1. They might not survive
2. They might contaminate other species with diseases.
3. could have different DNA





-----  
Swim Up ~ March 4th-8th, 2020  
tbc...